



TP53INP1 Polyclonal Antibody

Catalog No	YP-Ab-00535
Isotype	IgG
Reactivity	Human;Rat;Mouse;
Applications	WB;IHC;IF;ELISA
Gene Name	TP53INP1
Protein Name	Tumor protein p53-inducible nuclear protein 1
Immunogen	The antiserum was produced against synthesized peptide derived from human TP53INP1. AA range:171-220
Specificity	TP53INP1 Polyclonal Antibody detects endogenous levels of TP53INP1 protein.
Formulation	Liquid in PBS containing 50% glycerol, 0.5% BSA and 0.02% sodium azide.
Source	Polyclonal, Rabbit,IgG
Purification	The antibody was affinity-purified from rabbit antiserum by affinity-chromatography using epitope-specific immunogen.
Dilution	WB: 1/500 - 1/2000. IHC: 1/100 - 1/300. ELISA: 1/40000.. IF 1:50-200
Concentration	1 mg/ml
Purity	≥90%
Storage Stability	-20°C/1 year
Synonyms	TP53INP1; P53DINP1; SIP; Tumor protein p53-inducible nuclear protein 1; Stress-induced protein; p53-dependent damage-inducible nuclear protein 1; p53DINP1
Observed Band	27kD
Cell Pathway	Cytoplasm, cytosol. Nucleus. Nucleus, PML body. Cytoplasmic vesicle, autophagosome. Shuttles between the nucleus and the cytoplasm, depending on cellular stress conditions, and re-localizes to autophagosomes on autophagy activation.
Tissue Specificity	Ubiquitously expressed.
Function	function:In response to double-strand DNA breaks, promotes p53/TP53 phosphorylation on 'Ser-46' and subsequent apoptosis.,induction:By adriamycin, gamma irradiation and H(2)O(2), in a p53-dependent way. At lower levels by ultraviolet irradiation.,subcellular location:Concentrated in PML/POD/ND10 nuclear bodies.,subunit:Interacts with TP53 and HIPK2.,tissue specificity:Ubiquitously expressed.,
Background	function:In response to double-strand DNA breaks, promotes p53/TP53 phosphorylation on 'Ser-46' and subsequent apoptosis.,induction:By adriamycin, gamma irradiation and H(2)O(2), in a p53-dependent way. At lower levels by ultraviolet irradiation.,subcellular location:Concentrated in PML/POD/ND10



nuclear bodies.,subunit:Interacts with TP53 and HIPK2.,tissue specificity:Ubiquitously expressed.,

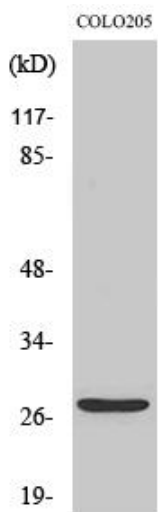
matters needing attention

Avoid repeated freezing and thawing!

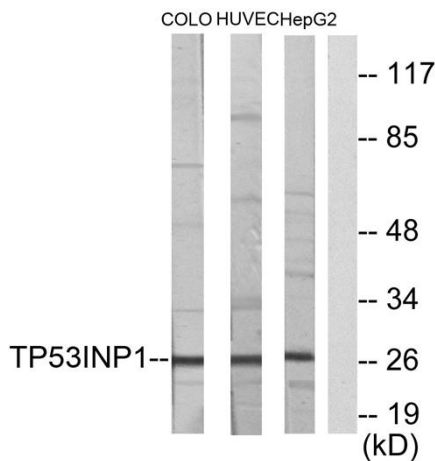
Usage suggestions

This product can be used in immunological reaction related experiments. For more information, please consult technical personnel.

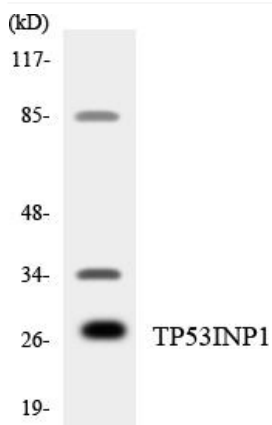
Products Images



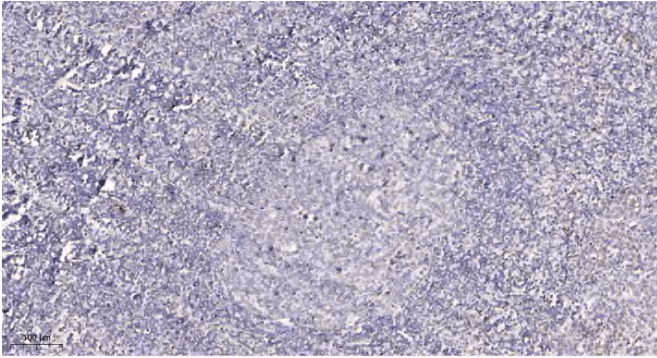
Western Blot analysis of various cells using TP53INP1 Polyclonal Antibody diluted at 1:1000. Secondary antibody(catalog#:RS0002) was diluted at 1:20000 cells nucleus extracted by Minute TM Cytoplasmic and Nuclear Fractionation kit (SC-003,Inventbiotech,MN,USA).



Western blot analysis of lysates from COLO205, HUVEC, and HepG2 cells, using TP53INP1 Antibody. The lane on the right is blocked with the synthesized peptide.



Western blot analysis of the lysates from HT-29 cells using TP53INP1 antibody.



Immunohistochemical analysis of paraffin-embedded human tonsil. 1, Antibody was diluted at 1:200(4° overnight). 2, Tris-EDTA,pH9.0 was used for antigen retrieval. 3,Secondary antibody was diluted at 1:200(room temperature, 30min).